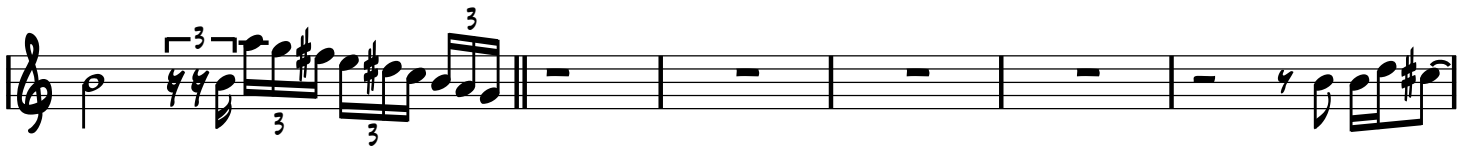
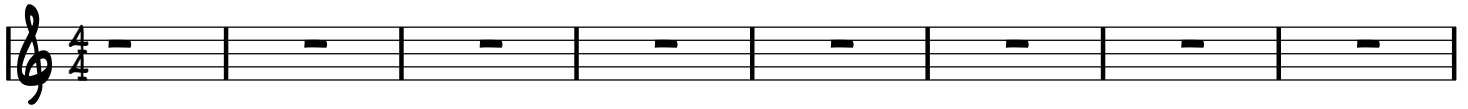


Flute

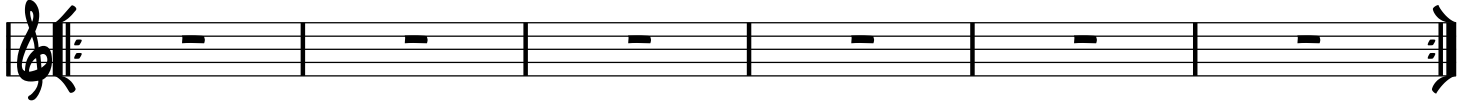
Frame Problem

Copyright © 2009, Alec Julien



SOLOS

F/B^b D/G G/C C/F G-/B^b G/B D^{Δ9} B^bΔ⁹ E^bΔ⁹ BΔ⁶#11 BΔ⁶#11



The image displays a musical score for five staves, all using a treble clef. The key signature is one sharp (F#), and the time signature is 4/4. The notation includes various rhythmic values such as eighth and sixteenth notes, often beamed together. Triplet markings, consisting of a bracket with the number '3' above it, are used to indicate groups of three notes. The first staff begins with a whole rest for the first four measures, followed by a series of eighth and sixteenth notes, including a triplet. The second staff continues with similar rhythmic patterns and triplet markings. The third staff features a double bar line, indicating a section change or the end of a phrase. The fourth and fifth staves conclude the piece with a final double bar line.